



# Motorcycle Guide

# 2022



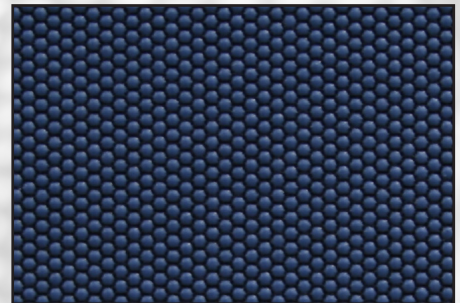
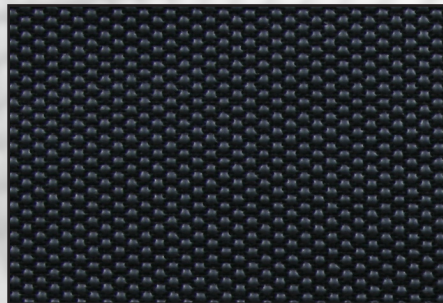
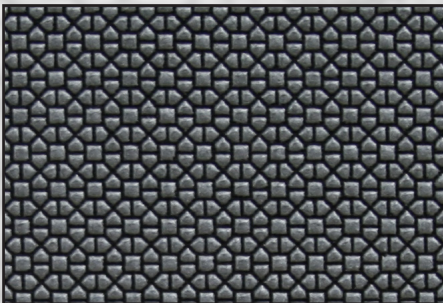
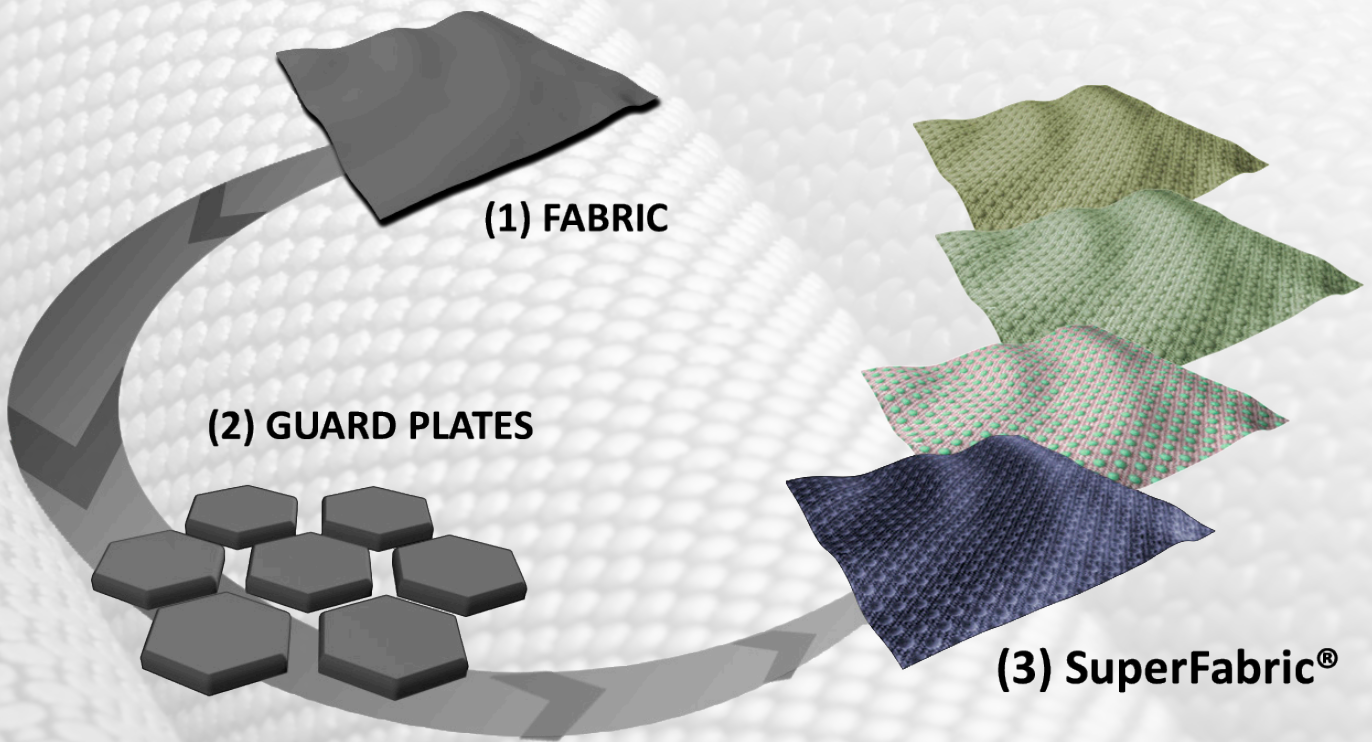
UNRIVALED PERFORMANCE. UNMATCHED DURABILITY. UNLIMITED POSSIBILITIES.

# TABLE OF CONTENTS

- 03 INTRODUCTION
- 04 SUPERFABRIC® PROPERTIES
- 06 SUPERFABRIC® PROTECTION
- 07 EXAMPLE SUPERFABRIC® MATERIALS
- 10 JACKETS | PANTS with SUPERFABRIC®
- 18 GLOVES with SUPERFABRIC®
- 24 CONTACT US

## Introduction

SuperFabric® materials are created by taking ordinary fabrics and layering on tiny, hard armor plates. These plates (guard plates) become an integral part of the fabric, retaining a soft, fabric-like feel while providing a variety of performance features such as high abrasion resistance, durability, and stain resistance. There are more than 50 standard SuperFabric® materials available in addition to customization of color, patterns, and performance.





## SuperFabric® for Motorcycle Apparel

- Performance

SuperFabric® materials are recognized by motorcycle apparel manufacturers for their outstanding abrasion and slash resistance, breathability, and stain resistance. SuperFabric® has materials that are extremely lightweight while still providing nice levels of performance using a variety of materials for the toughest apparel.

- Protection

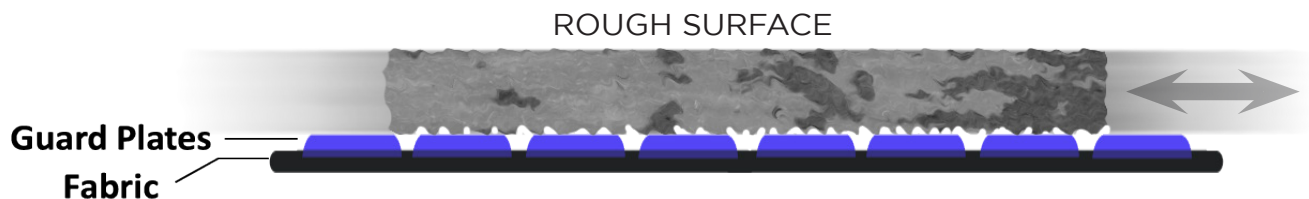
SuperFabric® materials provide protective solutions for hands, legs, arms, feet, and body. Wherever a threat exists, SuperFabric® materials can provide an engineered solution.

- Comfort

What good is protection and performance without comfort? SuperFabric® materials are flexible, and breathable, allowing performance at the highest levels while helping to keep riders confident they are using proven protection.

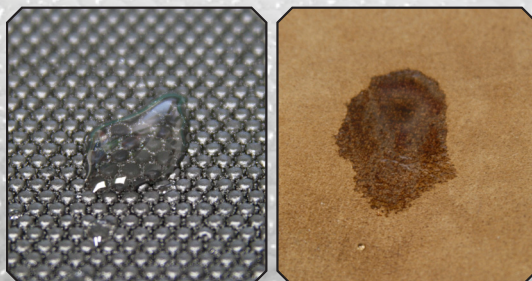
### ABRASION RESISTANT

The tiny armor plating of SuperFabric® materials provides high levels of abrasion resistance, which extends the life of products and equipment.



### QUICK DRYING

Most SuperFabric® materials are able to dry more than 10 times quicker than untreated leather. Dry means less weight and more comfort. Materials such as leather that are constantly exposed to water can rot, deteriorate, and crack, thereby shortening product life and performance.



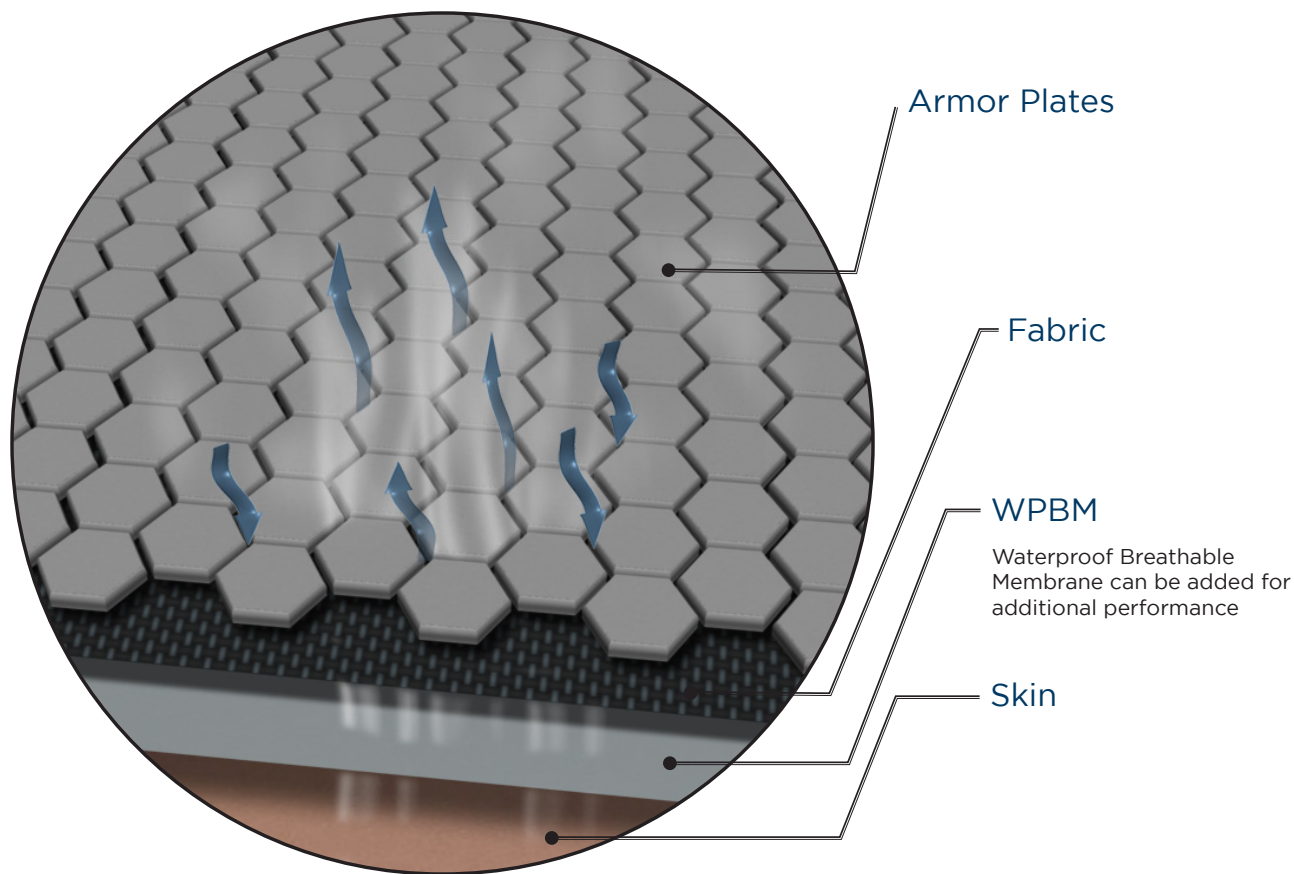
SuperFabric® material

Leather (suede)



## WATER RESISTANT/ BREATHABLE

If it's not comfortable, who will wear it? If it does not get worn, what good is it? SuperFabric® materials allow air to pass through the small gaps between guard plates, making them surprisingly breathable.



## SNAG RESISTANT

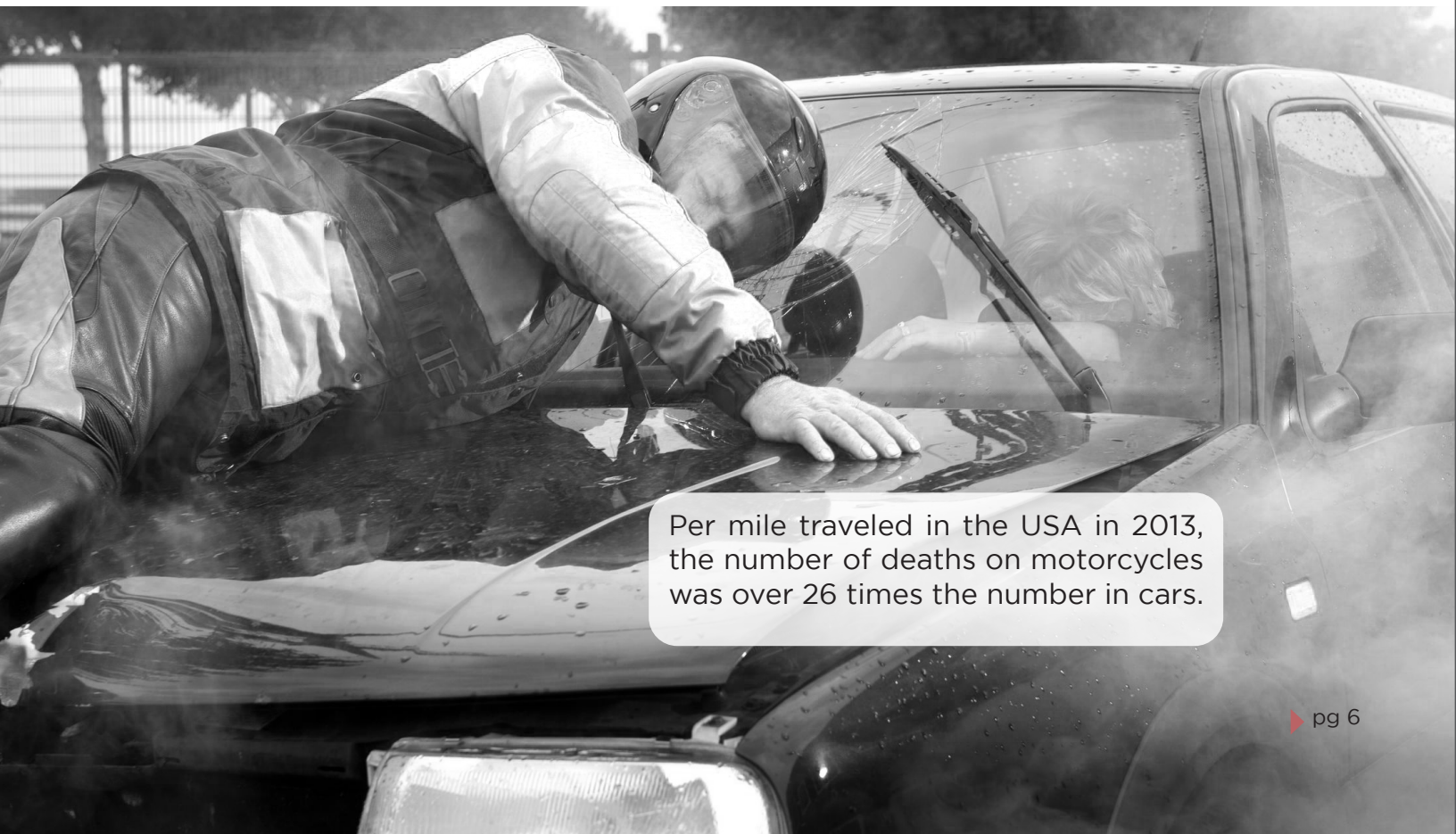
Knit materials, such as nylons, can easily snag on sharp objects, which not only diminishes their performance but looks as well. SuperFabric® materials are snag resistant with a surface that is more conducive to sliding, which can help prevent a falling rider from tumbling.

## STAIN RESISTANT

A nice benefit of SuperFabric® materials is their incredible stain resistance which allows garments to continue looking and performing like new.

## SuperFabric® PROTECTION

The illustrations below show the areas most likely to sustain injury in a motorcycle accident. Manufacturers have chosen to use SuperFabric® in precisely those areas. Coincidence? We think not.



Per mile traveled in the USA in 2013, the number of deaths on motorcycles was over 26 times the number in cars.

## SuperFabric® AVAILABLE

There are more than 50 standard SuperFabric® materials and many more special order materials available. These vary in performance, looks, and style.

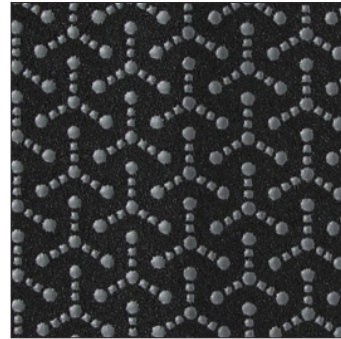
### A FEW EXAMPLES



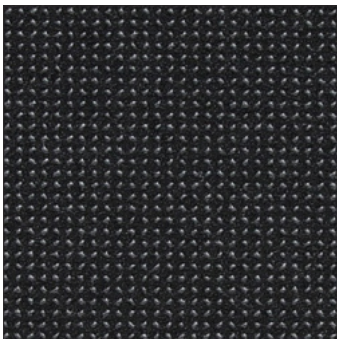
**600100-960**  
Dolphin Gray  
Penta 83/21-350  
Black Poly 600D



**600100-962**  
Mystic Black  
Penta 83/21-350  
Black Poly 600D



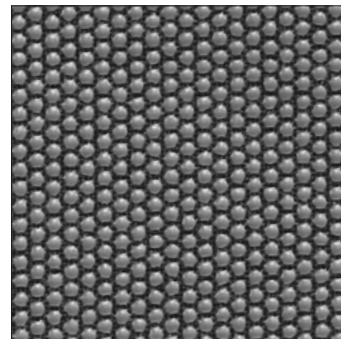
**600188-900**  
Pewter Gray  
Jax  
Black Poly 100D



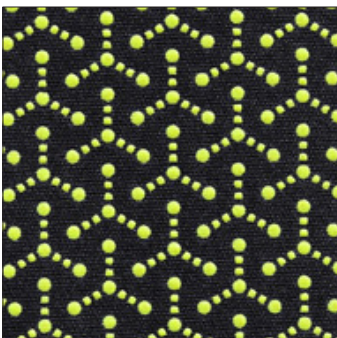
**600256-900**  
Pewter Gray  
XGP  
Black Poly 100D



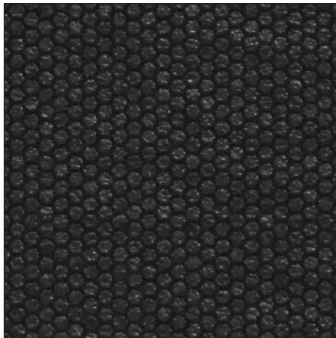
**600256-905**  
Dusky Black  
XGP  
Black Poly 100D



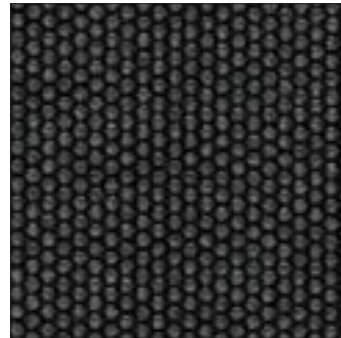
**601050-620**  
Stormcloud Gray  
Hex 80/18  
Black Poly 600D



**700196-089**  
Hi-Vis Yellow  
Jax  
Black JT Stretch 3-Layer



**700149-700**  
Raven Black  
Hex 60/10-200  
Black Poly 100D

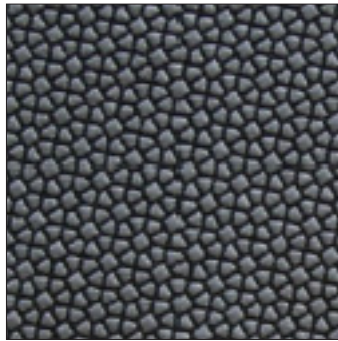


**700149-800**  
Charcoal Gray  
Hex 60/10-200  
Black Poly 100D

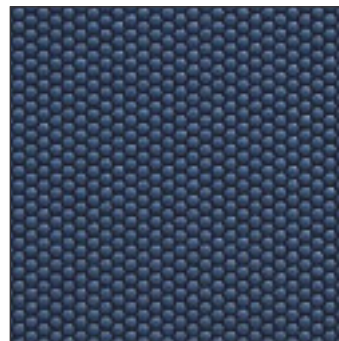




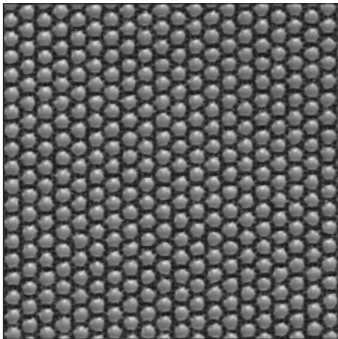
**600260-905**  
Dusky Black  
XGP  
Black Poly 600D



**600603-960**  
Dolphin Gray  
Penta 83/21-350  
Black Poly 600D



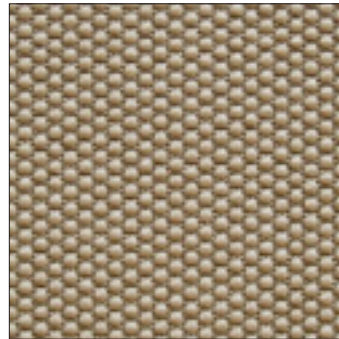
**700665-910**  
Slate Blue  
Hex 70/08-400  
Black Poly 600D



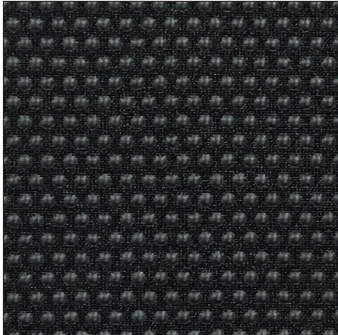
**601050-620**  
Stormcloud Gray  
Hex 80/18  
Black Poly 600D



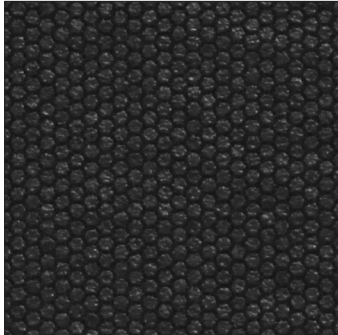
**601050-905**  
Dusky Black  
Hex 80/18  
Black Poly 600D



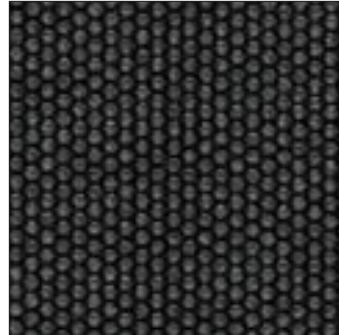
**601070-925**  
Sandstone  
Hex 80/14-400  
Tan Poly 600D



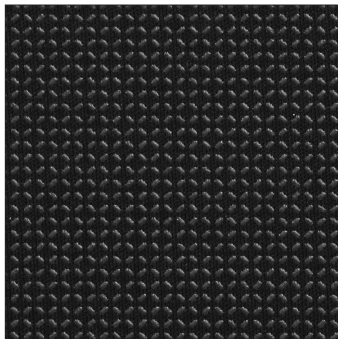
**700106-905**  
Dusky Black  
Round 80/40-300  
Stretch Nylon



**700149-700**  
Raven Black  
Hex 60/10-200  
Black Poly 100D



**700149-800**  
Charcoal Gray  
Hex 60/10-200  
Black Poly 100D



**700180-905**  
Dusky Black  
XGP  
Black JT Stretch 3-Layer

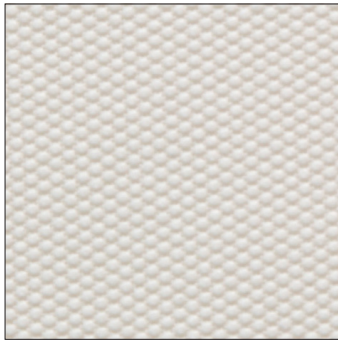


**702025-905**  
Dusky Black  
Jax  
Silver Reflective Fabric

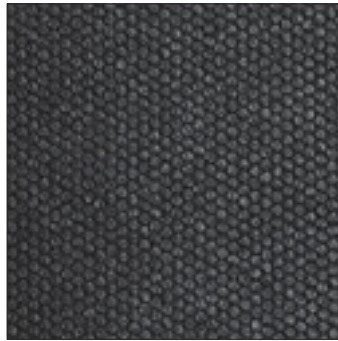


**700670-620**  
Stormcloud Gray  
Hex 70/08-400  
Black Poly 600D+Silicone

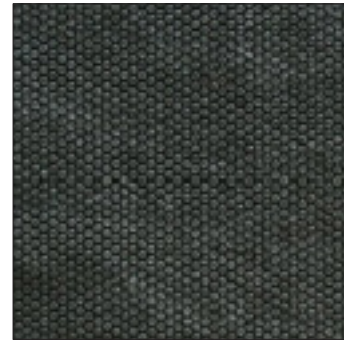




**700300-722**  
Eggshell White  
Hex 70/08-400  
White Poly 600D



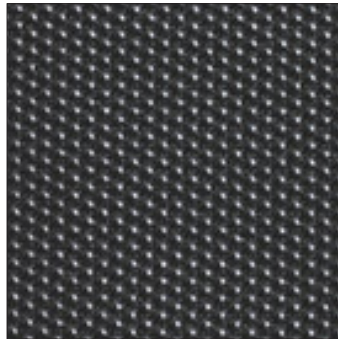
**700538-700**  
Raven Black  
Hex 50/05-200  
Black Poly 100D



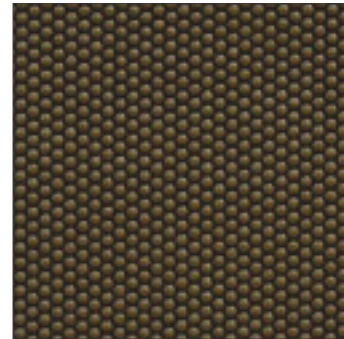
**700538-800**  
Charcoal Gray  
Hex 50/05-200  
Black Poly 100D



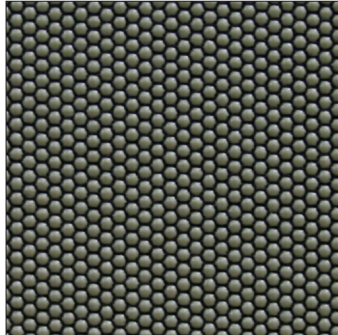
**700665-620**  
Stormcloud Gray  
Hex 70/08-400  
Black Poly 600D



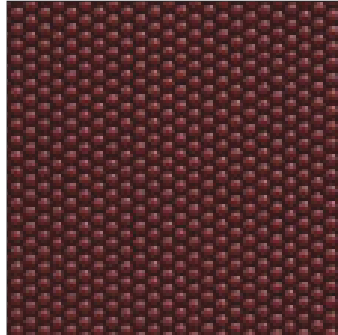
**700665-720**  
Onyx Black  
Hex 70/08-400  
Black Poly 600D



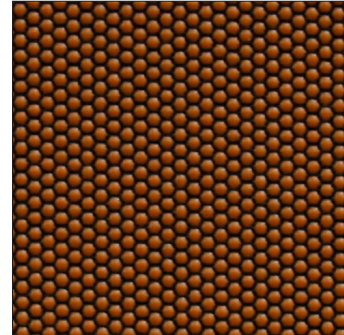
**700665-780**  
Nutmeg  
Hex 70/08-400  
Black Poly 600D



**700665-920**  
Mushroom  
Hex 70/08-400  
Black Poly 600D



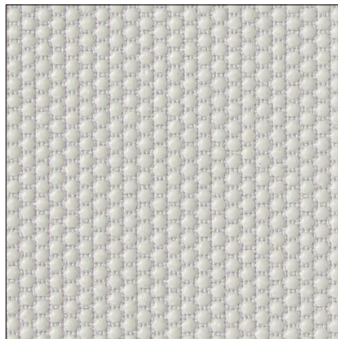
**700665-930**  
Red Wine  
Hex 70/08-400  
Black Poly 600D



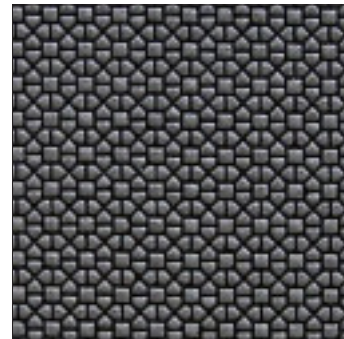
**700665-953**  
Pumpkin  
Hex 70/08-400  
Black Poly 600D



**700690-720**  
Onyx Black  
Hex 80/14-400  
Black Poly 600D



**700695-722**  
Eggshell White  
Hex 80/14-400  
White Poly 600D



**700810-935**  
Silver  
Penta 83/11-400  
Black Poly 600D



## JACKETS | PANTS WITH SUPERFABRIC®

SuperFabric® is regarded as a premium, high performance fabric for motorcycle jackets. It is most often used in the elbows and the shoulders to help prevent severe abrasion injuries. Its air breathing, water resistance, and high durability properties are praised by riders and manufacturers alike.



KLIM Adventure Rally Jacket  
Beautiful performance and design  
with SuperFabric® are integrated in  
the shoulders and elbow areas.







**KLIM Adventure Rally Pants**  
Large coverage areas around knees provides extreme abrasion resistance and performance.



42 percent of two-vehicle fatal motorcycle crashes involved a vehicle turning left while the motorcycle was going straight, passing, or overtaking the vehicle



# JACKETS | PANTS WITH SUPERFABRIC®



**Victory Platinum Jacket**  
This jacket spares no expense at protecting the rider with heavy coverage of SuperFabric® in elbows and collar areas.



**Victory Platinum Pants**  
A nice complement to the jacket, the Victory Pants offer superior protection with SuperFabric® in the knees.





### Scorpion Intake Jacket

The Scorpion jacket takes a refined approach by combining areas of SuperFabric® in the shoulders and elbows.





# JACKETS | PANTS WITH SUPERFABRIC®



TEIZ jackets are made with SuperFabric® in elbows and shoulders. TEIZ is a custom manufacturer of motorcycle apparel and designs their jackets and pants.









## JACKETS | PANTS WITH SUPERFABRIC®



TRIUMPH jacket uses SuperFabric® in the elbow and shoulder areas. Heavy duty SuperFabric® is used for maximum abrasion protection.





Motocross accidents are most commonly associated with injuries to the extremities and closed head trauma. Although the overall mortality is low, the number of injuries is high, with a large proportion of patients requiring surgery.





## GLOVES WITH SUPERFABRIC®

---

Gloves often provide the rider with the first line of defense in an accident. Hands can be the first point of contact during a crash. SuperFabric offers world-class protection in such areas as the palm, back of hand and even the wrist.









## GLOVES WITH SUPERFABRIC®

HELD is renowned for their innovation, performance, and style. They integrate SuperFabric® materials in a large array of gloves.









## GLOVES WITH SUPERFABRIC®

Both Racer and Rukka provide solutions for protecting the wrist and palm by utilizing SuperFabric® materials in key zones.







ASSERO GEAR  
Gloves with superior protection  
incorporate a very nice slide pad with  
SuperFabric®.







[Facebook.com/SuperFabric](https://www.facebook.com/SuperFabric)



[Twitter.com/SuperFabric](https://twitter.com/SuperFabric)



[Linkedin.com/company/SuperFabric](https://www.linkedin.com/company/SuperFabric)



[Instagram.com/superfabric\\_official](https://www.instagram.com/superfabric_official)



[YouTube.com/SuperFabricNews](https://www.youtube.com/SuperFabricNews)



[SuperFabric.com](https://www.SuperFabric.com)

SuperFabric® materials are not puncture, abrasion, or cut proof, etc. SuperFabric® materials are available in a variety of configurations and intended to be matched with suitable applications. Branding agreement is needed for the use of SuperFabric® materials.

©Higher Dimension Materials, Inc. 2022

Higher Dimension Materials, Inc. is the owner of all copyrights in the text, graphics, and fabric designs shown in this information guide. For more information please visit our website.

SuperFabric® is a registered trademark of Higher Dimension Materials, Inc. in the United States.

Pat. 5906873, other patents pending.

HDM, Inc. USA  
570 Hale Avenue N.  
Oakdale, MN 55128  
+001 651-730-6203  
[findoutmore@superfabric.com](mailto:findoutmore@superfabric.com)

HDM, Inc. Korea  
NO. 202, 94-7, Sinseol-dong,  
Dongdaemun-Gu,  
Seoul 02586 South Korea  
Phone: 82-(0)70-7099-9596

HDM, Inc. Singapore  
1 Tampines North Drive 1  
#01-38, T-Space Building  
Singapore 528559  
Tel: +65 68444012



[SuperFabric.com](https://www.SuperFabric.com)

©Copyright HDM, Inc. 2022